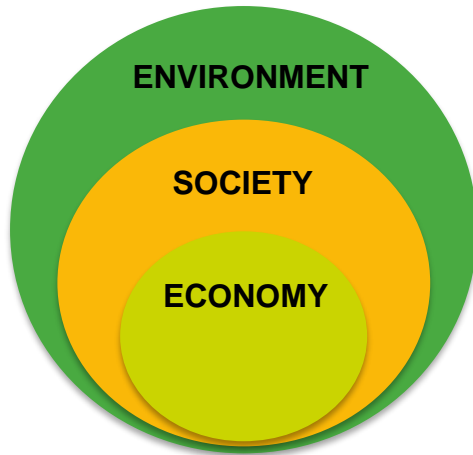


TRAVEL PLAN

Unitec Mt Albert Campus 2020/2021

ENCOURAGING SUSTAINABLE LIFESTYLES

Did you know that Aucklanders spend 20 working days a year stuck in traffic?



Climate change, as one of the biggest challenges facing humanity, requires us all to develop different ways of thinking and doing. As an organisation that values sustainable thinking, this travel plan is part of the solution and how Unitec can:

- Reduce its own ecological footprint and encourage our people to do the same.
- Contribute to our people leading happier, healthier lives.
- Do the best with the resources we have.

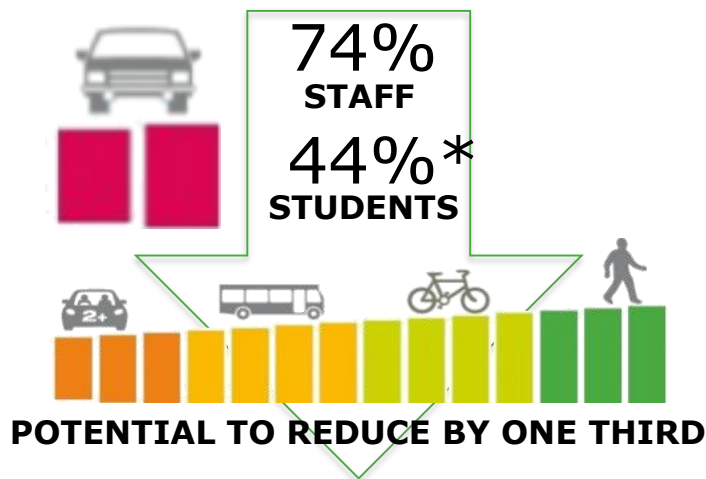
- To maintain the average NZ lifestyle, we would need 5.6 planets.
- On an individual level, our food and travel choices consume most environmental resources.

- In addition to physical benefits of moving more, leaving our car at home can improve mental health as we stress less and get to socialise more.

- Over the next few years, as campus retracts back to the core, we will have less space for parking. This is our opportunity to develop a campus that supports healthy, sustainable travel choices.

TRAVEL SURVEY RESULTS & INSIGHTS

Auckland is one of those cities designed for cars, so it comes as no surprise that most of us drive to Unitec alone. For some of us this is by choice, (or lack there of), but the majority is willing to explore other options and is actively looking for opportunities to do so.



- 26% of our staff don't see themselves driving alone in the future. There is also at least a three fold gap between those that currently cycle/walk and want to do so in the future.
- Out of the staff that currently drive, 31% live less than 1 hour away on public transport from campus. Similarly for our students, 31% that currently drive say they live close enough and could either walk or cycle to Uni.*
- There is plenty of potential for increasing awareness of Unitec travel options – on average one-third of staff are unaware of the initiatives, with a further quarter not being sure of how to access them.

For both students and staff, lack of private showers, changing rooms, easily accessible lockers and bike storage seems to be quite an issue when choosing to either walk or cycle.

Students drive because they don't find public transport cheaper.*

Staff are as open to carpooling as they are to public transport IF they get help finding a match.

For those interested in public transport, lack of convenience and/or increased travel times could be offset by flexible work hours. For the full breakdown of the 2020 staff travel survey results, check out [this report](#)

Staff survey conducted by Sustainability unit, July 2020, 491 responses. Student survey conducted by AT in May 2018, 231 responses.

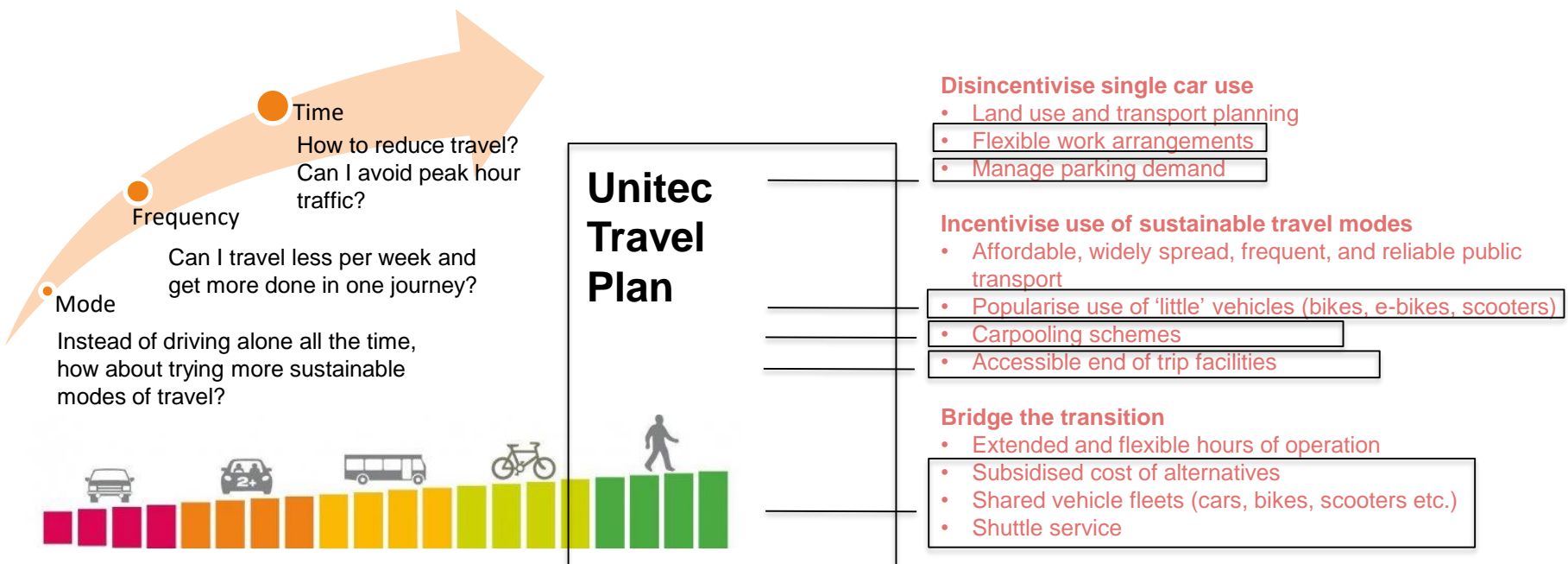
* AT's Biannual student survey postponed until 2021 due to COVID disruption. Only 2018 stats are currently available

CURRENTLY RELEVANT STRATEGIES FOR UNITEC

Shifting behaviour

Travel management is as much about when and how often we travel, as it is about how we get around. Traveling alone by car is still an option, but it is time to even out the playing field and **make it easier for more of us to more often make better travel choices** that help improve our own and environmental health.

The travel plan is about supporting those that are **able and willing** to leave their car at home and give more sustainable travel a go. While there are many ways to do this, we will start by focusing on actions within Unitec's direct control and influence.



'UNITEC ON THE MOVE' ACTION PLAN



Manage parking differently

- Relocate paid parking to the core (free outside)
- First come, first served
- Charges fund Sustainable Travel initiatives

Develop carpooling system

- Prototype UniWaka app
- Speed dating events
- Free parking at the core

Incentivise people to 'give it a go':

- Improve end of trip facilities
- Provide e-bikes/e-scooters purchasing scheme
- Consistently offer Auckland Transport's 2 week trial
- Connect with what others are doing (i.e. Onzo, Lime etc)
- Provide personalised journey plans
- Reward the champions
- Improve access to our fleet of bikes and cars
- Optimise the shuttle service
- Institutionalise flexible work arrangements and adapt more flexible finish and start times where practicable

Encourage active commute as part of wellness

- Walking groups
- Social bike ride events
- Active commute campaign: 'Making the time'

TOP THREE STAFF RECOMMENDATIONS 2020

Shuttle (28 mentions)

- | | |
|-----------------------------|--|
| Needs to serve a wider area | <ul style="list-style-type: none">• <i>Possibly, Unitec shuttles can ply to other pickup points (for staff) instead of only between campuses at least the morning and afternoon shuttles. Maybe, staff are willing to pay an extra monthly charge for the shuttle access from a closer point to their residence.</i>• <i>Run a direct bus from the shore / more support to North Shore and East Auckland staff</i>• <i>Maybe a few extra stops for the shuttle so I don't have to drive to catch it. If it ran between Henderson & Mt Albert with a stop in Te Atatu I would make use of it.</i> |
| Tweak the timetable | <ul style="list-style-type: none">• <i>Have an early Unitec shuttle from Henderson to Mt Albert least 7.30am so we can get to Mt Albert by 8am</i>• <i>Campus shuttle should ... have proper timings according to shift schedules of staff (i.e. 5.15pm not 5.00pm start)</i> |
| Fill the AT's gaps | <ul style="list-style-type: none">• <i>More shuttles between campuses during peak hours</i>• <i>Have bike rack on shuttle so we can put bike and/or e-bike with the shuttle</i>• <i>I would use the shuttle more regularly if it was to do pick-ups / drop off's from the AT bus stops along Carrington Rd</i> |

Flexi-work arrangements (23 mentions)

- | | |
|----------------|--|
| Flexi- time | <ul style="list-style-type: none">• <i>Help my manager understand that I can also work on the train/ bus - that I'm not running late or avoiding being here.</i>• <i>More flexible work hours so not so stressful to catch the bus in time!</i>• <i>Make hours more flexible to enable more car pooling.</i> |
| Flexi-location | <ul style="list-style-type: none">• <i>As I live out West it may be good that I can travel and work from an office or space at Waitakere campus rather than having to work from Mt Albert Campus, if I didn't need to go to be there for the day</i>• <i>I live in East Auckland and in the event we move into new structure of under one entity I prefer to work at MIT</i>• <i>The best solution for my situation is to allow working from home on non-teaching days. This also reduces congestion and pollution on the roads for others</i> |

Carpooling (18 mentions)

- | | |
|-----------------------------|---|
| From a simple map to an app | <ul style="list-style-type: none">• <i>Put out a staff map for those who want to share where they live and their times of work and are interested in carpooling</i>• <i>Would be great to have an app where each staff member would register their daily route. Then the app would suggest people on the same route to link together... Would be great both in terms of sustainability and building up cross-department connections.</i>• <i>If there is some list on Nest area wise, and we can see who all are from same area and get in touch for car pool</i> |
|-----------------------------|---|